



# Utilities - Electric

Power Plant	Average Capacity
Exelon Generation Co LLC/ Conowingo Hydroelectric Plant	572 MW
Calpine Corp/York Energy Center	519 MW
Connectiv Mid-Merit Inc./Delta Power Plant	545 MW
Bio-Energy Partners/Modern Landfill Production Plant	9 MW
PH Glatfelter Company	109.5 MW
Exelon Generation Co LLC/Peach Bottom	2304 MW
PPL Brunner Island	1566.8 MW
Reliant Energy Mid-Atlantic PH/ Tolna Power Plant	54 MW
STI Capital Co/York Cogen Facility	68.8 MW
York County Solid Waste Authority	36.5 MW
Met-Ed/York Haven Dam	19.6 MW

Did you know that Pennsylvania electricity was deregulated in January 2011?

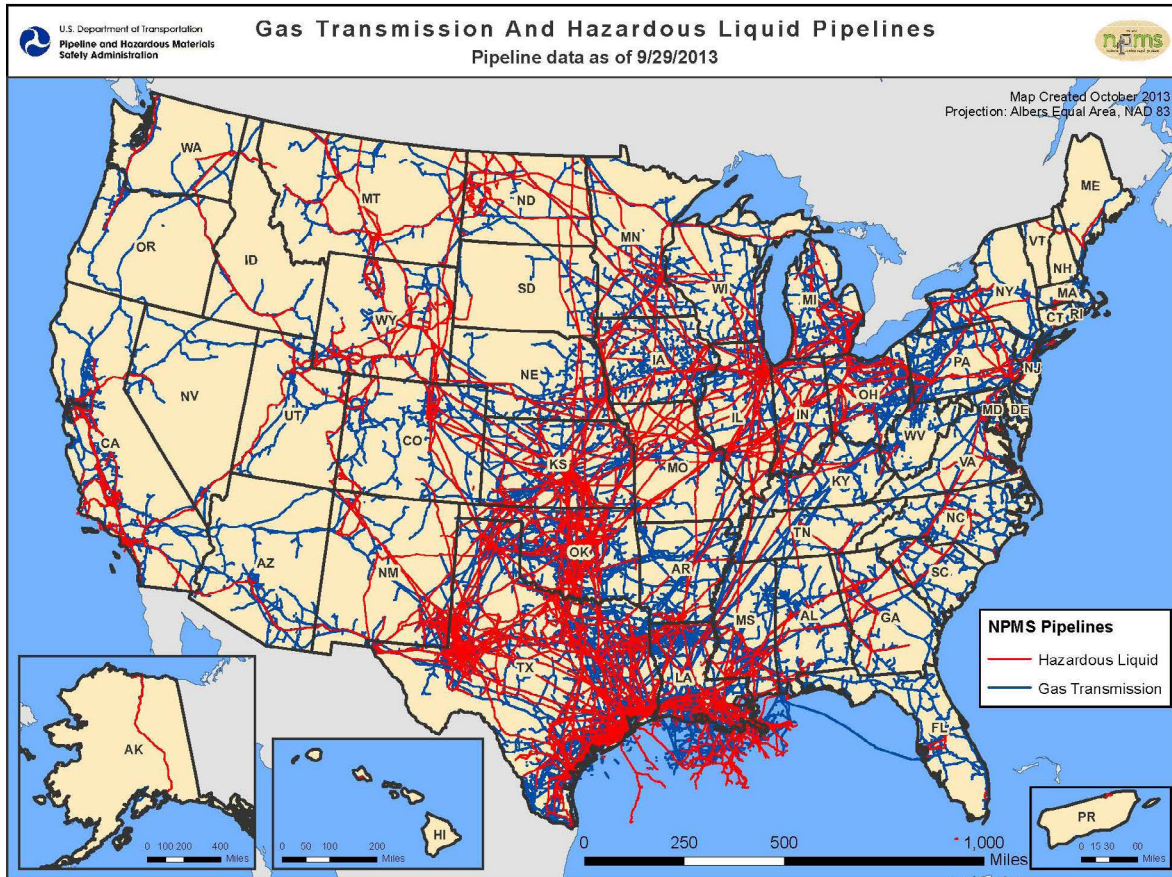
**Adams Electric Cooperative, Inc.** provides service to 33,000 homes and businesses in a four counties are within the southcentral Pennsylvania region, specifically including the western and southern York County.

**Met-Ed, A FirstEnergy Company** is the local affiliate of FirstEnergy, and is based in Reading, Pennsylvania and provides electric service to 495,000 residential and business customers within 3,300 square miles of southern and southeastern Pennsylvania.

**The PPL Brunner Island** power plant delivers electricity to a small territory in Northern York County. The coal-fired plant employs more than 240 workers, and has the ability to generate enough electricity each year to power about 1 million typical homes.

**Peach Bottom Atomic Power Station**, is located along the Susquehanna River in York County, and is co-owned by Exelon Generation and Public Service and Gas of New Jersey. Exelon Nuclear operates two of three units at Peach Bottom. Both units are boiling water reactors each capable of generating 1,140 MW of electricity. The facility serves more than 2 million homes and employees approximately 800 people.

# Utilities-Pipelines & Natural Gas



**Spectra Energy**, one of North America's premier natural gas pipeline infrastructure companies, consists of gathering and processing, transmission and storage, and distribution businesses. Spectra Energy's businesses include Texas Eastern Transmission; Algonquin Gas Transmission; East Tennessee Natural Gas; Union Gas; BC Pipeline Division; BC Field Services Division; Natural Gas Liquids Division; and Market Hub Partners. Natural gas operations include more than 19,100 miles of transmission pipeline and approximately 285 billion cubic feet (Bcf) of storage capacity in the United States and Canada. Spectra Energy currently has about 7,300 employees.

**TEMAX** (Texas Eastern Market Expansion) interconnects Clarington, Ohio and Transco's Station 195 in York County, Pennsylvania. Capacity of the line is 455 million cubic feet per day.

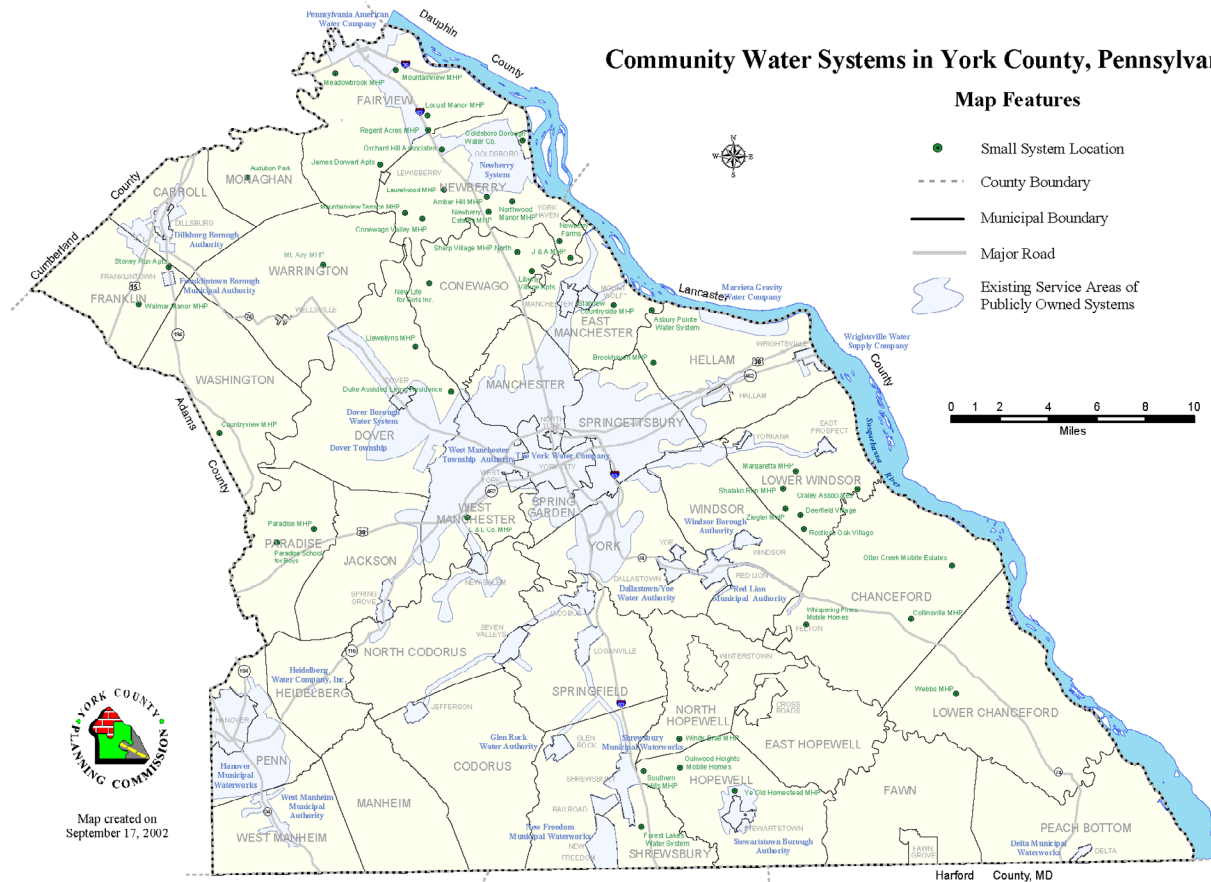
**Columbia Gas of Pennsylvania** is a subsidiary of NiSource, Inc., the second largest natural gas distributor in the U.S. They serve more than 413,000 customers in 26 counties in the Commonwealth of Pennsylvania.

**UGI's Gas Division** provides natural gas service to approximately 563,000 customers in portions of 45 eastern, northeastern and central Pennsylvania counties. A small portion of Northern York County falls under UGI coverage area.

# Utilities - Water



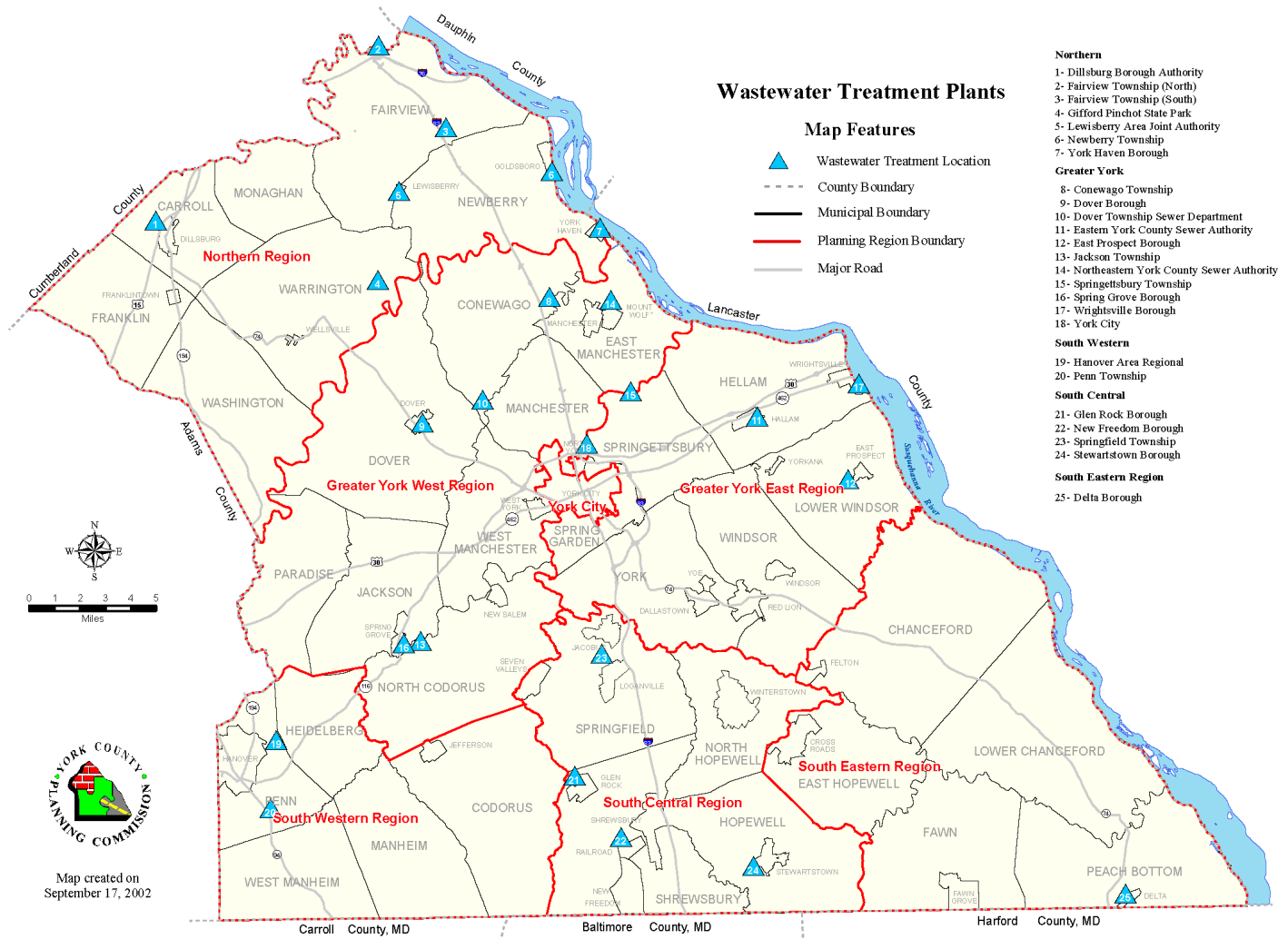
## Community Water Systems in York County, Pennsylvania



### Additional Water Providers in York County

Dallastown/Yoe Water Authority	Newberry System
Delta Municipal Waterworks	Pennsylvania American Water Company
Dillsburg Borough Authority	Red Lion Municipal Authority
Dover Borough Water System	Shrewsbury Municipal Authority
Franklintown Borough Municipal Authority	Stewartstown Borough Authority
Glen Rock Water Authority	United Water Pennsylvania, Inc.
Goldsboro Borough Water Company	West Manchester Township Authority
Hanover Municipal Waterworks	West Manheim Municipal Authority
Heidelberg Water Company, Inc.	Windsor Borough Authority
Marietta Gravity Water Company	Wrightsville Water Supply Company
New Freedom Municipal Waterworks	

# Utilities - Wastewater

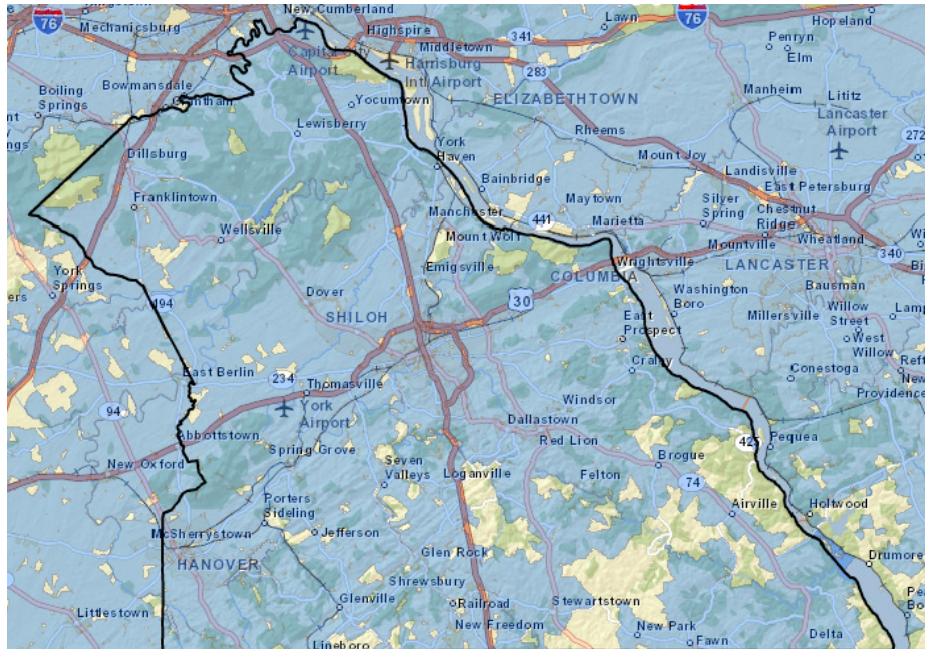




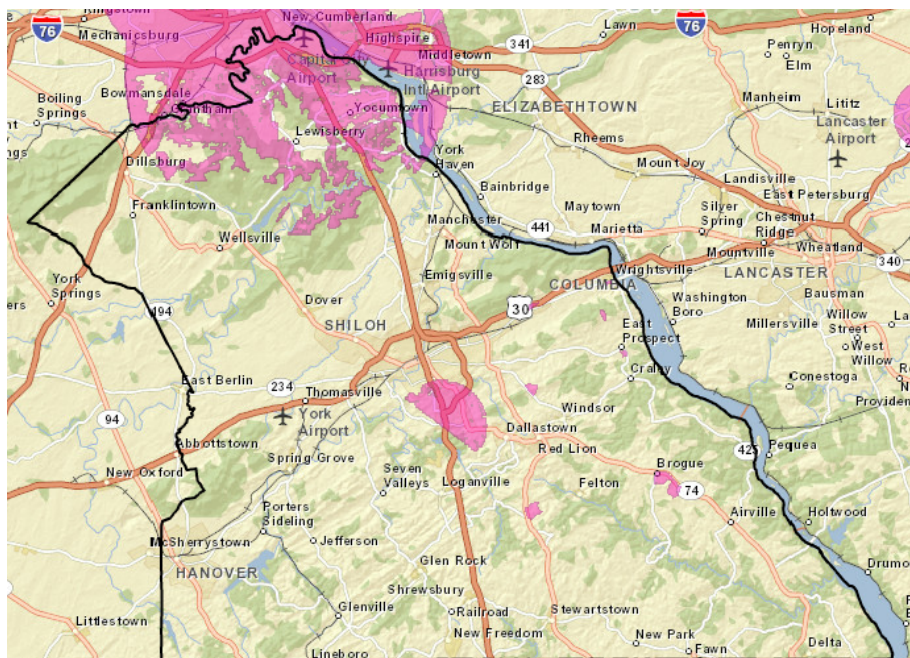
# Utilities - Communications

There are approximately 20 broadband providers serving York County. Mobile wireless services are available throughout the County.

## Cable Service



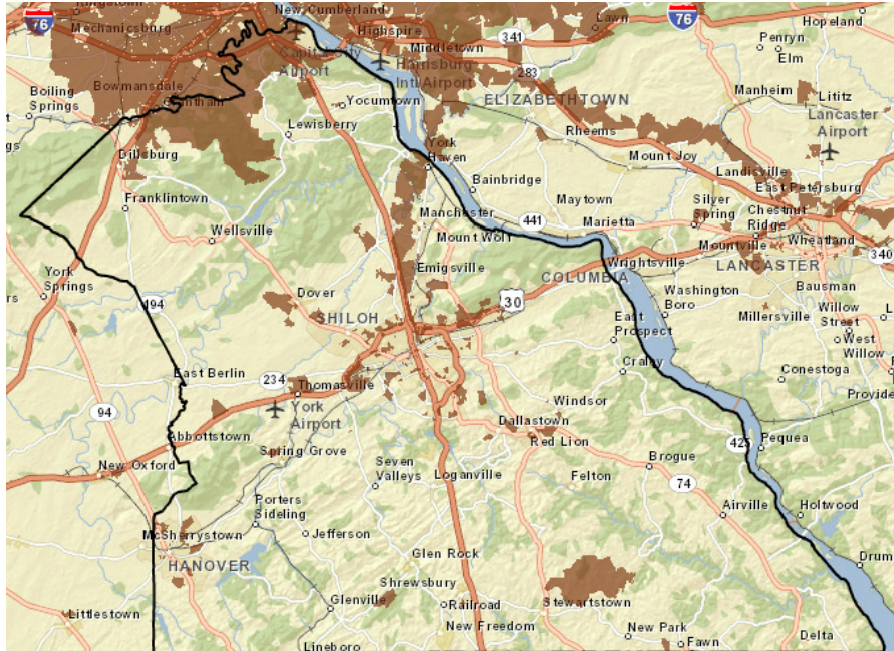
## Fixed Wireless



# Utilities - Communications



## Fiber Service



## DSL Service

