

2024 General Election YoCo Voter Guide

Tuesday, November 5 General Election

Make Your Vote Happen.

Information in this Voter Guide is current as of the time of printing. For the most up to date information regarding elections please visit vote.pa.gov or yorkcountypa.gov/503/Elections-Voter-Registration.

Dear Voter,

Every year is an election year. This year voters across our country will cast their ballots in a General Election on November 5, 2024, to elect the President of United States, the Chief Executive of our federal government and a bevy of other crucial offices.

While issues facing our Republic are serious and passions are certain to burn brightly throughout this campaign season, we urge our friends, neighbors, and colleagues to remain civil, to engage in productive debate on the issues, and to make their voices heard by casting their ballot.

In addition to electing the President of the United States, this year's elections in Pennsylvania include a United States Senator and our US Representatives. At the state level, we will elect a new Attorney General, an Auditor General, and a State Treasurer. Half of our State Senators, those in odd-numbered districts are up for election. As are all 203 members of the Pennsylvania State House of Representatives.

This Voter Guide will provide you with all of the information that you need to know for the mechanics of casting a ballot this year. While, knowing how and when to vote is an important part of participating in elections, it is equally important to ensure that you make an informed decision based on the candidates' positions and the issues on the ballot. We encourage you to keep up to date on the issues that matter to you and engage with the candidates via a variety of forums to help you make your decisions this year.

Be informed. Make a Plan. Vote.

Sincerely,

YoCo Voter Guide Partners

YoCo Voter Guide Partners



Affordable Housing
ADVOCATES
OPENING DOORS, Improving Lives



NAACP
York Branch



**York County
Economic
Alliance**

**York County Office of
Elections and Voter
Registration**

**York County
Municipal Managers
Association**

**eliminating racism
empowering women**
ywca
York

Table of Contents

Important Dates to Remember	4
Resources	4
Voter Registration	5
Mail-in Ballots	6
Absentee Ballots	7
Voter ID Information for First-Time Voters	8
Polling Location Details	8
Poll Worker Information	10
Voting Rights for Reentrants	10
Candidates on the Ballot	12
York County District Maps	13

Important Dates to Remember

Monday, October 21 - Last day to register to vote in the 2024 General Election

Tuesday, October 29 - Last day to apply for a mail-in or absentee ballot for the 2024 General Election

Curbside Drop-Off Service - York County Administration Center 28 E. Market Street, York, PA 17401

- Saturday, October 26 and November 2 from 10am to 2pm;
- November 3 from 10am to 2pm; and,
- Election Day, November 5 from 7am to 8pm.

Curbside Drop-Off Service - 2401 Pleasant Valley Road, York, PA 17402

- Saturday, October 26 and November 2 from 10am to 2pm;
- November 3 from 10am to 2pm.

Election Day: Tuesday, November 5 - Polls are open from 7:00 am to 8:00 pm. Hand delivery of mail-in or absentee ballots must be completed by 8:00 pm on this day to the York County Elections & Voter Registration Office, 2401 Pleasant Valley Road, Suite 219, York, PA 17402 or 28 E. Market Street, York, PA 17401.

Resources

York County Elections and Voter Registration Office

Regular Business Hours: 8:00 am to 4:30 pm, Monday to Friday

Phone: 717-771-9604

Website: yorkcountypa.gov/503/Elections-Voter-Registration

Locations:

2401 Pleasant Valley Road, Suite 219, York, PA 17402 - East York Office & Mailing Address

28 E. Market Street, York, PA 17401 - Downtown York City Office

Pennsylvania Department of State Voting and Elections

Phone: 1-877-868-3772

Website: www.vote.pa.gov

Commonwealth of Pennsylvania Voting and Elections Guide

Website: <https://www.pa.gov/guides/voting-and-elections/>

Voter Registration

Monday, October 21 is the last day to register to vote in the General Election

Please note, if you have moved since the last election, your legal name has changed, or you would like to change your party affiliation, you can do so using the same voter registration form below. Be sure to confirm that you are registered to vote before the deadline.

To register to vote you must:

1. Fill out a voter registration application form.
2. Deliver your application to the York County Election office for review.
3. If your application is accepted, you will get a voter registration card in the mail. The voter card will show your name, address, party affiliation, and the address where you will vote.

You can fill out an application:

Option 1: Submitting the Online form.

(<https://www.pavoterservices.pa.gov/Pages/VoterRegistrationApplication.aspx>)

Option 2: By mail. Print and fill out this voter registration application.

(https://www.vote.pa.gov/Resources/Documents/Voter_Registration_Application_English.pdf)

Applications are also available in Spanish, Simplified & Traditional Chinese, and Vietnamese

(<https://www.vote.pa.gov/Register-to-Vote/Pages/How-to-Register-to-Vote.aspx>)

Option 3: Visit the York County Elections & Voter Registration Office, 2401 Pleasant Valley Road, Suite 219, York, PA 17402 or at the Downtown York City Office, 28 E. Market Street, York, PA 17401.

You can update your registration by:

Option 1: Submitting the Online form.

(<https://www.pavoterservices.pa.gov/pages/VoterRegistrationApplication.aspx>)

Option 2: Print and mail in an updated voter registration application.

(https://www.vote.pa.gov/Resources/Documents/Voter_Registration_Application_English.pdf)

Applications are also available in Spanish, Simplified & Traditional Chinese, and Vietnamese

(<https://www.vote.pa.gov/Register-to-Vote/Pages/How-to-Register-to-Vote.aspx>)

Option 3: Visit the York County Elections & Voter Registration Office located at 2401 Pleasant Valley Road, Suite 219, York, PA 17402 or at the Downtown York City Office, 28 E. Market Street, York, PA 17401.

Check your registration status here:

<https://www.pavoterservices.pa.gov/pages/voterregistrationstatus.aspx>

Mail-in Ballots

Who is eligible?

- All registered voters in Pennsylvania are eligible to apply for a mail-in ballot and voters are not required to provide a reason for requesting a mail-in ballot.

How to apply for a Mail-in Ballot

Option 1: Registered voters can apply for a mail-in ballot online.

(<https://www.pavoterservices.pa.gov/OnlineAbsenteeApplication/#/OnlineAbsenteeBegin>)

Option 2: Registered voters can print and mail in an application to receive a mail-in ballot.

(<https://www.vote.pa.gov/Voting-in-PA/Pages/Mail-and-Absentee-Ballot.aspx>)

Applications are also available in Spanish, Simplified & Traditional Chinese, and Vietnamese

Option 3: Apply for a mail-in ballot in person at either York County Elections & Voter Registration Office location: 2401 Pleasant Valley Road, Suite 219, York, PA 17402 at 28 E. Market Street, York, PA 17401.

Important Items to Note

- The deadline to apply for a mail-in ballot is Tuesday, October 29.

How to Vote with a Mail-in Ballot

Step 1: Complete your ballot.

Step 2: Please note: there are two envelopes. Place your ballot in the identified yellow “Official Election Ballot” envelope and then into the mailing envelope. Be sure to sign the declaration on the back of the mailing envelope **and date it with the date of your signature**, or your vote may not count.

Step 3: Your ballot must be **RECEIVED** by the York County Election Office **BEFORE** Tuesday, November 5 at 8:00 pm.

You can mail your ballot to the York County Election Office located at 2401 Pleasant Valley Road, Suite 219, York, PA 17402, or hand deliver you ballot to either the Pleasant Valley Road location or the Downtown York City Office located at 28 E. Market Street, York, PA 17401. Ballots must be returned **BEFORE** Tuesday, November 5 at 8:00 pm. **Postmarks are not enough** and if your ballot is not received in time it will not be counted.

Important Items to Note

- You can check the status of your mail-in ballot here - <https://www.pavoterservices.pa.gov/Pages/BallotTracking.aspx>
- If you added your email to your mail-in ballot application, you will receive a confirmation when your ballot arrives at the election office.
- A video demonstration showing the steps to complete your mail-in ballot is available here - <https://www.youtube.com/watch?v=0RfWafqTKt4&t=7s>
- **Please note**, that only the voter can drop off his or her mail-in ballot, unless the voter has a disability, as defined by the Americans with Disabilities Act, and has completed the necessary paperwork to authorize a designated agent to obtain and/or return the mail-in ballot.
 - <https://www.vote.pa.gov/Resources/Documents/Authorize-Designated-Agent-for-Mail-in-or-Absentee-Ballot.pdf>

Absentee Ballots

Who is eligible?

Registered voters who fall under one of the following circumstances:

- College students who are not registered to vote at their school address.
- People whose work or vacation take them away from the municipality where they live on voting day.
- Those with a physical disability or illness that prevents them from going to the polling place.
- People who may have a conflict due to the celebration of a religious holiday.
- Service Members, their families, and overseas citizens **must** go through the Federal Postcard Application (FPCA) process. For full Information, go to the Federal Voting Assistance Program website at <https://www.fvap.gov/>.
- Inmates who haven't been convicted of a felony.

How to receive an Absentee Ballot

Option 1: Registered voters can apply for an absentee ballot online -

(<https://www.pavoterservices.pa.gov/OnlineAbsenteeApplication/#/OnlineAbsenteeBegin>)

Option 2: Registered voters can print and mail in an application to receive an absentee ballot.

(<https://www.vote.pa.gov/Voting-in-PA/Pages/Mail-and-Absentee-Ballot.aspx>)

Applications are also available in Spanish, Chinese, and Vietnamese

Option 3: Apply for an absentee ballot in person at 2401 Pleasant Valley Road, Suite 219, York, PA 17402 or at the Downtown York City Office located at 28 E. Market Street, York, PA 17401.

Important Item to Note

- Absentee ballot applications must be **RECEIVED** by the York County Election Office by 5:00 pm on Tuesday, October 29, the elections office will be open until 5:00 pm if a voter prefers to complete a ballot application in-person.

How to Vote with an Absentee Ballot

Step 1: Complete your ballot.

Step 2: Please note: there are two envelopes. Place your ballot in the identified "Official Election Ballot" envelope and place it in the mailing envelope. Be sure to sign the declaration on the back of the mailing envelope **and date it with the date of your signature**, or your vote may not count.

Step 3: Your ballot must be **RECEIVED** by the York County Election Office **BEFORE** Tuesday, November 5 at 8:00 pm.

You can mail your ballot to the York County Election Office located at 2401 Pleasant Valley Road, Suite 219, York, PA 17402, or hand deliver you ballot to either the Pleasant Valley Road location or the Downtown York City office located at 28 E. Market Street, York, PA 17401. Ballots must be returned **BEFORE** Tuesday, November 5 at 8:00 pm. **Postmarks are not enough** and if your ballot is not received in time it will not be counted.

Important Items to Note

- You can check the status of your absentee ballot here:
<https://www.pavoterservices.pa.gov/Pages/BallotTracking.aspx>
- If you added your email to your absentee ballot application, you will receive a confirmation when your ballot arrives at the election office.
- A video demonstration showing the steps to complete your absentee ballot is available here -
<https://www.youtube.com/watch?v=0RfWafqTKt4&t=7s>
- **Please note**, that only the voter can drop off his or her ballot, unless the voter has a disability, as defined by the Americans with Disabilities Act, and has completed the necessary paperwork to authorize a designated agent to obtain and/or return the absentee ballot.
 - <https://www.vote.pa.gov/Resources/Documents/Authorize-Designated-Agent-for-Mail-in-or-Absentee-Ballot.pdf>

Voter ID Information for First-Time Voters

Who is required to show proof of identification before Voting?

Voters who are voting in a polling place for the first time are required to show an approved form of identification before they are permitted to vote in a polling place. This applies to voters who are newly registered to vote and those who have moved to another polling place.

Approved forms of Photo Identification are:

- Pennsylvania driver's license or PennDOT ID card
- ID issued by any Commonwealth agency
- ID issued by the U.S. Government
- U.S. passport
- U.S. Armed Forces ID
- Student ID
- Employee ID
- Firearm permit

If you do not have a photo ID, a non-photo ID that contains your name and address can be used:

- Confirmation issued by the County Voter Registration Office
- Non-photo ID issued by the Commonwealth
- Non-photo ID issued by the U.S. Government
- Current utility bill
- Current bank statement
- Current paycheck
- Government check

Polling Location Details

Find your polling place here:

<https://yorkcountypa.gov/969/Vote-in-Person> or
<https://www.pavoterservices.pa.gov/Pages/PollingPlaceInfo.aspx>

Poll Worker Information

How to Become a Poll Worker

If you are interested in becoming a poll worker, fill out the poll worker interest form, available here: <https://yorkcountypa.easypollworker.com/home> or call 717-771-9604

After you submit the form, the York County Elections & Voter Registration Office or precinct Judge of Elections will contact you. You can also reach out to the election office to follow up. More information can be found here: <https://yorkcountypa.gov/972/Become-a-Poll-Worker>.

Requirements

- You must be registered to vote in York County
 - Exceptions exist for 17-year-old high school students, who must meet additional requirements. High school students should contact the county election office for more information.
- Government officials and government employees including federal, state, county, municipal, and city are not allowed to serve as poll workers.
 - Exceptions exist for district judges, notaries public, and members of the Pennsylvania National Guard.
 - Likewise, you are generally not allowed to serve if your name appears on the ballot.
- Poll workers can work full or half days. Poll workers working full days can expect to be at their polling station by 6:00 am until after the polls close at 8:00 pm.
- Poll workers are required to attend a county-led training prior to their election day duties.
- All poll workers are paid for their time.

Voting Rights for Reentrants

Source: <https://www.vote.pa.gov/Register-to-Vote/Pages/Convicted-Felon,-Misdemeanant-or-Pretrial-Detainee.aspx>

Who can register to vote?

You may register and vote if you hold citizenship in the United States for at least one month. before the next election, are a Pennsylvania resident and resided in your election district for at least 30 days before the next election; and will be at least 18 years of age on the day of the next election.

If you meet the above qualifications, you can register and vote if you:

- Are a pretrial detainee confined in a penal institution awaiting trial on charges of a felony or a misdemeanor.
- Are convicted of a misdemeanor and are confined in a penal institution.
- Were released (or will be released by the date of the next election) from a correctional facility or community confinement facility upon completion of your term of incarceration for conviction of a misdemeanor or a felony.
- Are on probation or released on parole.
- Are a parolee living in a community confinement center (except for state intermediate punishment (SIP) inmates)
- Are under house arrest (home confinement), regardless of conviction status or the status of the conditions of confinement.

You are not eligible to register and vote if you:

- Are currently confined in a penal institution for conviction of a felony (even if you are also incarcerated for one or more misdemeanor offenses) and will not be released from confinement before the next election.
- Are in a community confinement facility or other alternative correctional facility for conviction of a felony and will not be released before the date of the next election.
- Were convicted of violating any provision of the Pennsylvania Election Code within the last four years.

How can you register to vote?

If you are qualified to register to vote you may apply to register using the instructions provided in the previous sections of this guide.

Please note: If you are in a penal institution, your residence for voter registration is:

- The last place you registered to vote before confinement in a penal institution; or
- Your last known physical address before confinement (You may not use a P.O. Box); or
- A new residence established while confined (for example, if your spouse establishes a new residence where you intend to reside upon your release from confinement).
- A penal institution or community confinement facility cannot be your residence address for registering to vote; however, you may use those locations for your mailing address.

How do you vote after registering?

- If you are confined to a penal institution, apply for an absentee ballot. Further instruction is explained in the above sections.
- If you are **not** confined in a penal institution, community confinement facility, or under house arrest, you may vote in person at your assigned polling place. That location is on your voter identification card or can be found using the directions in an earlier section of this guide.

Candidates on the Ballot

Federal Office Candidates (Candidates are listed alphabetically by party affiliation):

- President & Vice President of the United States (4-year term):
 - Kamala Harris & Tim Walz (Democratic Party)
 - Jill Stein & Rudolph "Butch" Ware (Green Party)
 - Chase Oliver & Mike ter Maat (Libertarian Party)
 - Donald John Trump & JD Vance (Republican Party)
- United States Senator (6-year term)
 - Bernard Selker (Constitution Party)
 - Robert P. Casey, Jr. (Democratic Party) - Incumbent
 - Leila L. Hazou (Green Party)
 - John C. Thomas, Jr. (Libertarian Party)
 - David McCormick (Republican Party)
- Representative for the Pennsylvania 10th Congressional District (2-year term)
 - Janelle Stelson (Democratic Party)
 - Scott Perry (Republican Party) - Incumbent
- Representative for the Pennsylvania 11th Congressional District (2-year term)
 - James Atkinson (Democratic Party)
 - Lloyd Smucker (Republican Party) - Incumbent

State Office Candidates:

- Attorney General of Pennsylvania (4-year term)
 - Justin Luke Magill (Constitution Party)
 - Eugenio 'Eugene' DePasquale (Democratic Party)
 - Eric Lawrence Settle (Forward Party)
 - Richard L. Weiss (Green Party)
 - Robert J. Cowburn (Libertarian Party)
 - David Sunday (Republican Party)
- Auditor General of Pennsylvania (4-year term)
 - Eric K. Anton (American Solidarity Party)
 - Alan R. Goodrich, Sr. (Constitution Party)
 - Malcolm Kenyatta (Democratic Party)
 - Reece William Smith (Libertarian Party)
 - Timothy Lionel DeFoor (Republican Party) - Incumbent
- State Treasurer of Pennsylvania
 - Troy D. Bowman (Constitution Party)
 - Erin McClelland (Democratic Party)
 - Christopher J. Foster (Forward Party)
 - Nickolas Mark Ciesielski (Libertarian Party)
 - Stacey Garrity (Republican Party) - Incumbent

- Pennsylvania State Senator for the 31st District (4-year term)
 - Mark Temons (Democratic Party)
 - Dawn W. Keefer (Republican Party)

- Pennsylvania State Representative for the 47th District (2-year term)
 - Edward Lee Ritter (Democratic Party)
 - Joesph Frank D'Orsie (Republican Party)- Incumbent

- Pennsylvania State Representative for the 92nd District (2-year term)
 - Daniel A. Almoney (Democratic Party)
 - Marc S. Anderson (Republican Party)

- Pennsylvania State Representative for the 93rd District (2-year term)
 - Paul Michael 'Mike' Jones (Republican Party) - Incumbent

- Pennsylvania State Representative for the 94th District (2-year term)
 - Wendy Fink (Republican Party) - Incumbent

- Pennsylvania State Representative for the 95th District (2-year term)
 - Carol D. Hill-Evans (Democratic Party) - Incumbent
 - Jasmine Rivera (Republican Party)

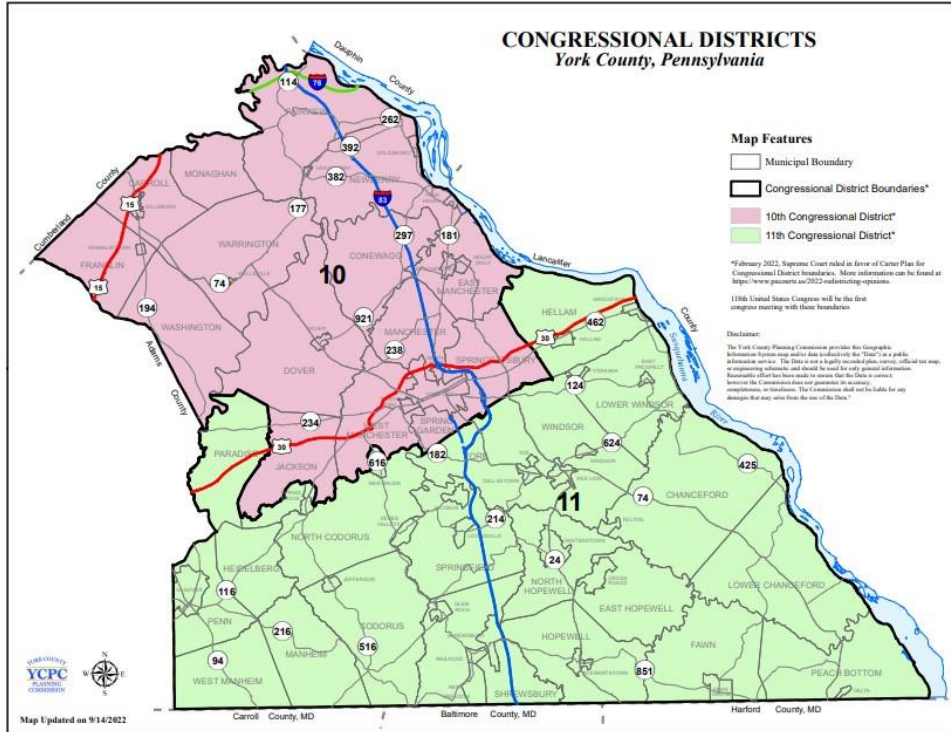
- Pennsylvania State Representative for the 169th District (2-year term)
 - Kate Anne Klunk (Republican Party) - Incumbent

- Pennsylvania State Representative for the 196th District (2-year term)
 - Seth Michael Grove (Republican Party) - Incumbent

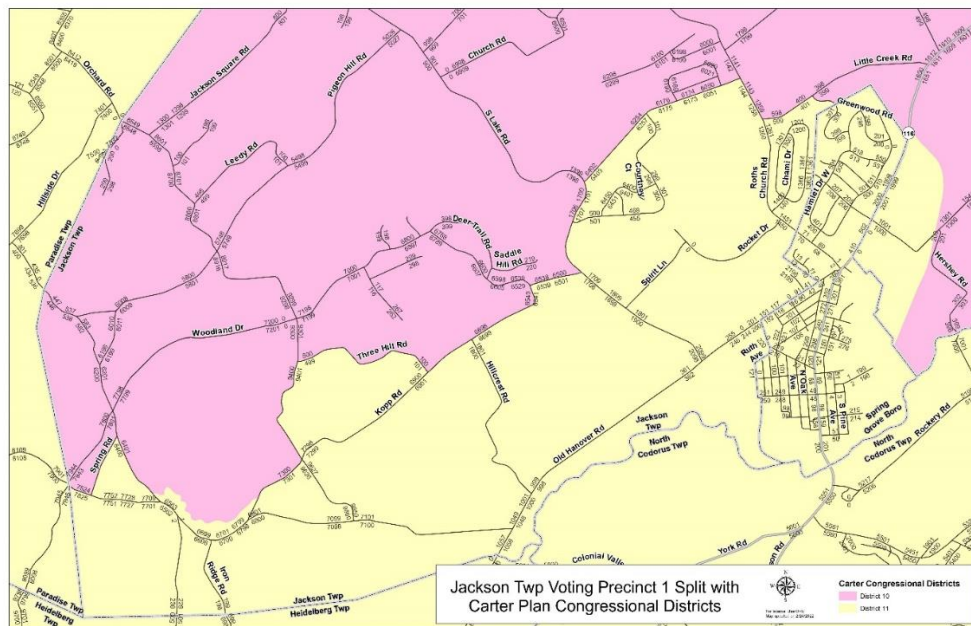
York County District Maps

*The maps below provide a rough outline to determine a voter's districts. Voters can precisely determine their districts at <https://www.legis.state.pa.us/cfdocs/legis/home/findyourlegislator/>.

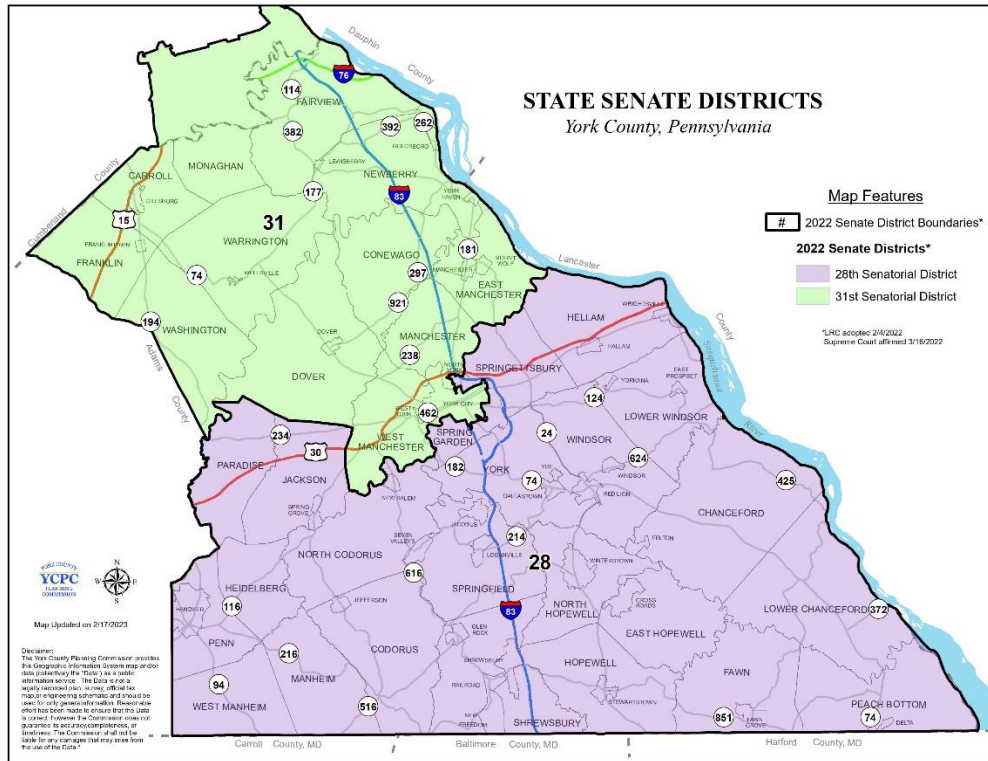
Pennsylvania Congressional Districts:



Jackson Township 1st Precinct Split:



State Senate Districts, York County:



State House Districts, York County:

