

2026 Midterm Primary YoCo Voter Guide

Tuesday, May 19 Midterm Primary Election

Make Your Vote Happen.

Information in this Voter Guide is current as of the time of printing. For the most up to date information regarding elections go to vote.pa.gov

Dear Voter,

The 2026 midterm elections give voters in **York County and across Pennsylvania** a chance to choose leaders at the local, state, and national levels. These elections help decide who will make laws and decisions that affect schools, roads, healthcare, taxes, public safety, and much more.

This guide will help you understand what you may see on your ballot and the ways to cast your vote in this year's elections.

National Offices

In 2026, voters will elect members of the **U.S. House of Representatives**. All of Pennsylvania's 17 U.S. House seats are up for election this year, including the districts that cover parts of York County. These offices help make federal laws overseeing the nation's budget and policies. These representatives serve two-year terms.

Pennsylvania does **not** have a U.S. Senate election this year.

Pennsylvania State Offices

Voters across Pennsylvania will choose leaders who run state government:

- **Governor and Lieutenant Governor:** These leaders manage the state and carry out state laws.
- **Pennsylvania State Senate:** About half of the Senate seats are up for election (even-numbered districts).
- **Pennsylvania House of Representatives:** All 203 House seats are on the ballot.

State lawmakers pass state laws, set budgets, and represent local communities' interest in Harrisburg. These state offices have a direct impact on everyday issues like education funding, infrastructure, healthcare access, and local business regulations.

Who Can Vote in a PA Primary Election?

In a primary election, you may only vote for the party you are registered with.

- Registered **Republicans** can only vote a Republican ballot.
- Registered **Democrats** can only vote a Democrat ballot.

If you are registered with any other party or as an Independent, you cannot vote in the primary election.

Special Election - 196th House District

On May 19, voters in the **196th House District** (West Manchester and Spring Grove area) will vote in a special election. This election will fill the open seat left by former State Representative Seth Grove.

All registered voters in the 196th House District may vote in this election, no matter their party.

Every election matters. The choices made in midterm elections affect daily life in Pennsylvania and in York County. This guide is designed to give you clear, simple information so that you can vote with confidence.

Be informed. Make a Plan. Vote.

Sincerely,

YoCo Voter Guide Partners

YoCo Voter Guide Partners



Table of Contents

Important Dates to Remember	4
Resources	4
Voter Registration	5
Vote-by-Mail & Absentee Ballots	6
Voter ID Information for First-Time Voters	7
Finding your Polling Place	8
Poll Worker Information	8
Voting Rights for Reentrants	9
Offices on the Ballot	10
York County District Maps	12

Important Dates to Remember

Monday, May 4th: Last day to register to vote in the Primary Election

Tuesday, May 12th: Last day to apply for a vote-by-mail ballot for the Primary Election

Tuesday, May 19th - Primary Election Day: Polls are open from 7:00 am to 8:00 pm. Vote-by-mail ballots must be received by the York County EVR Office by 8:00 pm.

Resources

York County Elections and Voter Registration (EVR) Office

Regular Business Hours: 8:00 am to 4:30 pm, Monday to Friday

Visit the office in-person at:

Downtown York Office
York County Administrative Center
28 E. Market Street
Room B003
York, PA 17401

or

East York Office
Pleasant Valley Road
2401 Pleasant Valley Road
Suite 219
York, PA 17402

Phone: 717-771-9604

Website: www.yorkcountypa.gov/elections

Pennsylvania Department of State Voting and Elections

Phone: 1-877-868-3772

Website: www.vote.pa.gov

Commonwealth of Pennsylvania Voting and Elections Guide

Website: <https://www.pa.gov/guides/voting-and-elections/>

In case of an election-related emergency, call the York County EVR Office. They can provide specific advice regarding voting at an alternate location, requesting an emergency absentee ballot, and other provisional options to ensure that your vote is counted.

Voter Registration

Monday, May 4th is the last day to register to vote or update your registration for the Primary Election

Registering to vote is the first step in participating in elections. To vote in Pennsylvania, you must register at least 15 days before Election Day. When your application is accepted, you will get a voter registration card in the mail. Your card will show your name, address, party affiliation, and your polling place (where you vote).

Who Can Register to Vote?

To register to vote in York, Pennsylvania, you must:

1. Be a **U.S. Citizen** for at least one month before Election Day,
2. **Live in Pennsylvania and your voting district** for at least 30 days before Election Day, and
3. Be **18 years old** on or before Election Day (if you are 17, you can pre-register).

How Do I Register to Vote?

You can register to vote online, by mail, or in-person at several government agencies including Pennsylvania Department of Transportation (PennDOT) Photo License and Driver's License Centers.

Option 1: Register online at PAVoterServices.pa.gov.

Option 2: Print and complete a [voter registration form](#). Applications are also available in Spanish, simplified and traditional Chinese, and Vietnamese at the [PA Department of State website](#).

Option 3: Visit the York County EVR Office at either their Downtown York or East York locations and complete a registration in-person.

When Should I Update My Registration?

You will need to update your voter registration when:

1. You move or change your address,
2. You change your name, or
3. You change your political party preference.

Option 1: Online at PAVoterServices.pa.gov

Option 2: By mail by printing and completing a [voter registration form](#). Applications are also available in Spanish, simplified and traditional Chinese, and Vietnamese at the [PA Department of State website](#).

Option 3: Visit the York County EVR Office at either their Downtown York or East York locations and complete a registration in-person.

How Do I Check My Voter Registration Status?

Check your registration status at PAVoterServices.pa.gov.

Vote-by-Mail & Absentee Ballots

What Is a Vote-by-Mail Ballot?

Vote-by-mail ballots allow you to vote without going to your polling place on Election Day. You receive your ballot by mail, fill it out at home, and return it by mail or in-person. In Pennsylvania, there are two types of vote-by-mail ballots: mail-in ballots and absentee ballots.

Mail-in Ballots

Who is Eligible for a Mail-in Ballot?

All registered voters in Pennsylvania are eligible for a mail-in ballot. You are not required to list a reason for requesting a mail-in ballot.

How to Apply for a Mail-in Ballot

Option 1: Online at [PAVoterServices.pa.gov](https://pavoterservices.pa.gov).

Option 2: Print and complete [an application](#) to receive a mail-in ballot. Applications are also available in Spanish, simplified and traditional Chinese, and Vietnamese at the [PA Department of State website](#).

Option 3: Visit the York County EVR at either their Downtown York or East York locations and complete an application in-person.

Absentee Ballots

Who is Eligible for an Absentee Ballot?

You may request an absentee ballot if:

- You are a **college student** and are not registered at your school address,
- Your **work or travel** will keep you away from home on Election Day,
- You have an **illness or disability** that prevents you from going to your polling place,
- You cannot vote because of a **religious holiday**,
- You are in the **military**. Military voters should apply at fvap.gov, or
- You are **in jail** but have not been convicted of a felony.

How to Apply for an Absentee Ballot

Option 1: Online at [PAVoterServices.pa.gov](https://pavoterservices.pa.gov).

Option 2: Print and complete [an application](#) to receive an absentee ballot. Applications are also available in Spanish, simplified and traditional Chinese, and Vietnamese at the [PA Department of State website](#).

Option 3: Visit York County EVR at either their Downtown York or East York locations and complete an application in-person.

How to Vote with a Vote-by-Mail or Absentee Ballot

Step 1: Complete your ballot.

Step 2: Place your ballot in the "Official Election Ballot" envelope and place that envelope in the mailing envelope. Sign the declaration on the back of the mailing envelope. Write the date you signed it. If you do not place your ballot in the "Official Election Ballot" envelope or sign and date the mailing envelope, your vote may not count.

Step 3: Mail or hand-deliver your ballot to either York County EVR Office locations. Ballots must be returned **BEFORE** Tuesday, May 19th at 8:00 pm. **Postmarks are not enough.** If your ballot is not received in time it will not be counted.

Important Items to Note

- The deadline to apply for a vote-by-mail ballot is **Tuesday, May 12th.**
- You can check the status of your vote-by-mail ballot at PAVoterServices.pa.gov
- If you included your email when you applied, you will get a message when your ballot is received by the election office.
- A video showing how to complete your vote-by-mail ballot is available on [YouTube](https://www.youtube.com).
- Only you may return your vote-by-mail ballot.
 - If you have a disability, you may choose someone to help.
 - You must complete the required form to name a designated agent.
 - The form is available at www.vote.pa.gov.

Voter ID Information for First-Time Voters

Who Must Show ID When Voting?

You must show an approved form of identification (ID) if:

- You recently registered to vote and are voting at a polling place for the first time, or
- You moved and are voting at a new polling place.

If you have voted at your polling place before, you usually do not need to show ID.

You may use one of these photo IDs:

- Pennsylvania driver's license or PennDOT ID card
- ID issued by any Commonwealth agency
- ID issued by the U.S. Government
- U.S. passport
- U.S. Armed Forces ID
- Student ID
- Employee ID
- Firearm permit

If you do not have a photo ID, you may use a non-photo ID. Your ID must show your current name and address.

- Voter registration card issued by York County EVR
- Non-photo ID issued by the Commonwealth
- Government check
- Non-photo ID issued by the U.S. Government
- Current utility bill
- Current bank statement
- Current paycheck

Finding your Polling Place

Where Do I Vote on Election Day?

If you vote in-person on Election Day, you must go to your assigned polling place. Your polling place is based on where you live. You can find your polling place at PAVoterServices.pa.gov.

Poll Worker Information

How to Become a Poll Worker

If you want to become a poll worker:

- Fill out the [interest form](#)

OR

- Call the election office: 717-771-9604

After you apply, the York County EVR Office or your polling place's Judge of Elections (lead poll worker) will contact you. You can learn more at the [York County EVR website](#).

Requirements

- You must be registered to vote in York County.
 - Some 17-year-old high school students may qualify. Contact the county election office for more details.
- Most government officials and government employees cannot serve as poll workers.
 - Some exceptions apply.
- You usually cannot serve if your name appears on the ballot.
- Poll workers may work full or half days.
 - Full day workers arrive by 6:00 am and stay until after the polls close at 8:00 pm.
- Poll workers must attend training before Election Day.
- All poll workers are paid for their time.

Voting Rights for Reentrants

For more information on voting rights for reentrants, please visit the [PA Department of State website](#).

Who Can Register to Vote?

You may register and vote if you:

- Are a **U.S. citizen** for at least one month before Election Day,
- Live in **Pennsylvania** and your voting district for at least 30 days before Election Day, and
- Will be **18 years old** on or before Election Day

If you meet these rules, you can still register and vote if you:

- Are **awaiting trial** on charges of a felony or a misdemeanor, even if you are in jail,
- Were convicted of a **misdemeanor** and are in jail,
- Were released (or will be released by the date of the next election) from jail or prison,
- Are on **probation or parole**,
- Live in a **community confinement center** (except for state intermediate punishment (SIP) inmates), or
- Are under **house arrest**.

Who Cannot Register and Vote:

You **cannot register and vote** if you:

- Are currently in jail or prison for a **felony conviction** and will not be released before Election Day,
- Are in a community correctional facility for a **felony conviction** and will not be released before Election Day, or
- Were convicted of certain **election law violations** within the last four years.

How to Register?

If you are eligible, you may register to vote using the steps listed earlier in this guide.

What Address Should You Use

If you are in jail or a correctional facility, your voting address is:

- The last address where you lived before you were confined, or
- A new address you plan to live at after release.

How to Vote After Registering

- If you are **confined**, apply for an **absentee ballot**.
- If you are **not confined**, vote in-person at your **assigned polling place**.

Your polling place is listed on your voter registration card or can be found online.

Offices on the Ballot

Federal Office Candidates (Listed Alphabetically by Last Name):

- U.S. Representative for the 10th Congressional District (2-year term)
 - Republican Primary
 - Rep. Scott Perry (Incumbent)
 - Democratic Primary
 - Justin Douglas
 - Janelle Stelson

- U.S. Representative of the 11th Congressional District (2-year term)
 - Republican Primary
 - Lloyd Smucker (Incumbent)
 - Democratic Primary
 - Nancy Mannion

State Office Candidates (Listed Alphabetically by Last Name):

- Governor of the Commonwealth of Pennsylvania (4-year term)
 - Republican Primary
 - Stacy Garrity
 - Democratic Primary
 - Josh Shapiro (Incumbent)

- Lt. Governor of the Commonwealth of Pennsylvania (4-year term)
(Primary Election Conducted Separately from the Governor - Elected as a Ticket In November)
 - Republican Primary
 - Brian Thomas
 - Democratic Primary
 - Austin Davis (Incumbent)

- Pennsylvania State Senator for the 31st District (4-year term)
 - Republican Primary
 - Kristin Philips-Hill (Incumbent)
 - Democratic Primary
 - Thomas Johnson

- Pennsylvania State Representative for the 47th District (2-year term)
 - Republican Primary
 - Joesph D'Orsie (Incumbent)
 - Democratic Primary
 - Edward Ritter

- Pennsylvania State Representative for the 92nd District (2-year term)
 - Republican Primary
 - Marc Anderson (Incumbent)
 - Democratic Primary
 - Krista Jean Anderson

- Pennsylvania State Representative for the 93rd District (2-year term)
 - Republican Primary
 - Mike Jones (Incumbent)
 - Democratic Primary
 - Melissa Barnes

- Pennsylvania State Representative for the 94th District (2-year term)
 - Republican Primary
 - Wendy Fink (Incumbent)
 - Democratic Primary
 - Konnor Grimek

- Pennsylvania State Representative for the 95th District (2-year term)
 - Republican Primary
 - Jasmine Rivera
 - Democratic Primary
 - Carol Hill-Evans (Incumbent)

- Pennsylvania State Representative for the 169th District (2-year term)
 - Republican Primary
 - Kate Klunk (Incumbent)
 - Democratic Primary
 - Austin Graham

- Pennsylvania State Representative for the 196th District (2-year term) (Primary)
 - Republican Primary
 - George Margetas
 - Democratic Primary
 - Ronald Ruman

Special Election: (Open to all registered voters)

- Pennsylvania State Representative for the 196th District (6-months of current term)
 - Republican Candidate
 - George Margetas
 - Democratic Candidate
 - Ronald Ruman

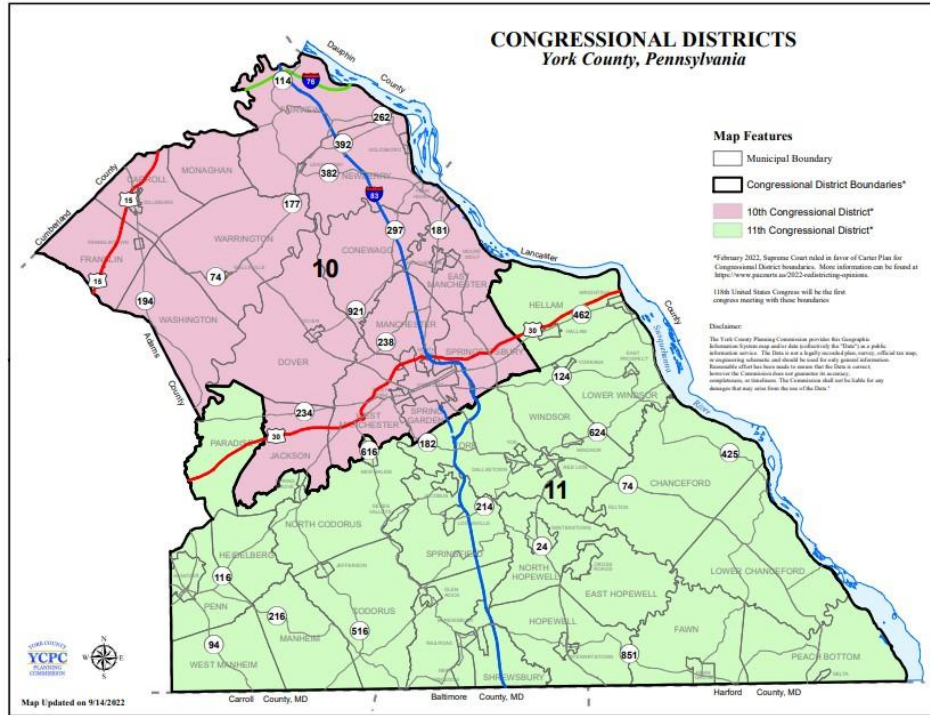
Republican/Democratic Party Offices:

- Statewide Republican/Democratic Party Members (4-year Term)
- Precinct Level Countywide Republican/Democratic Party Members (4-year Term)

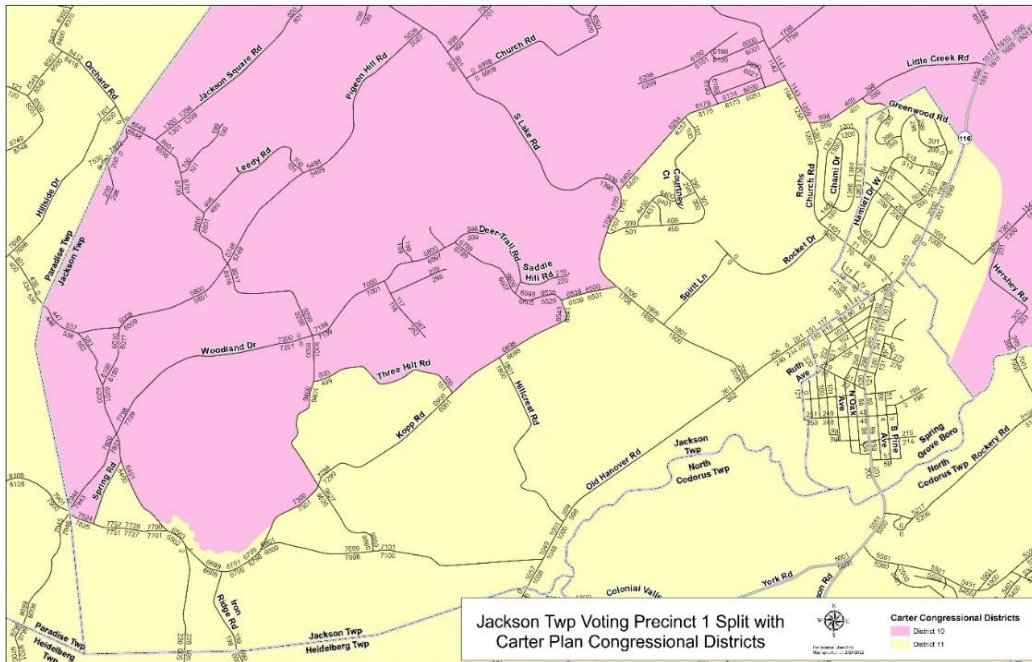
York County District Maps

The maps below show a general view of voting districts. To find your exact district, visit PAVoterServices.pa.gov.

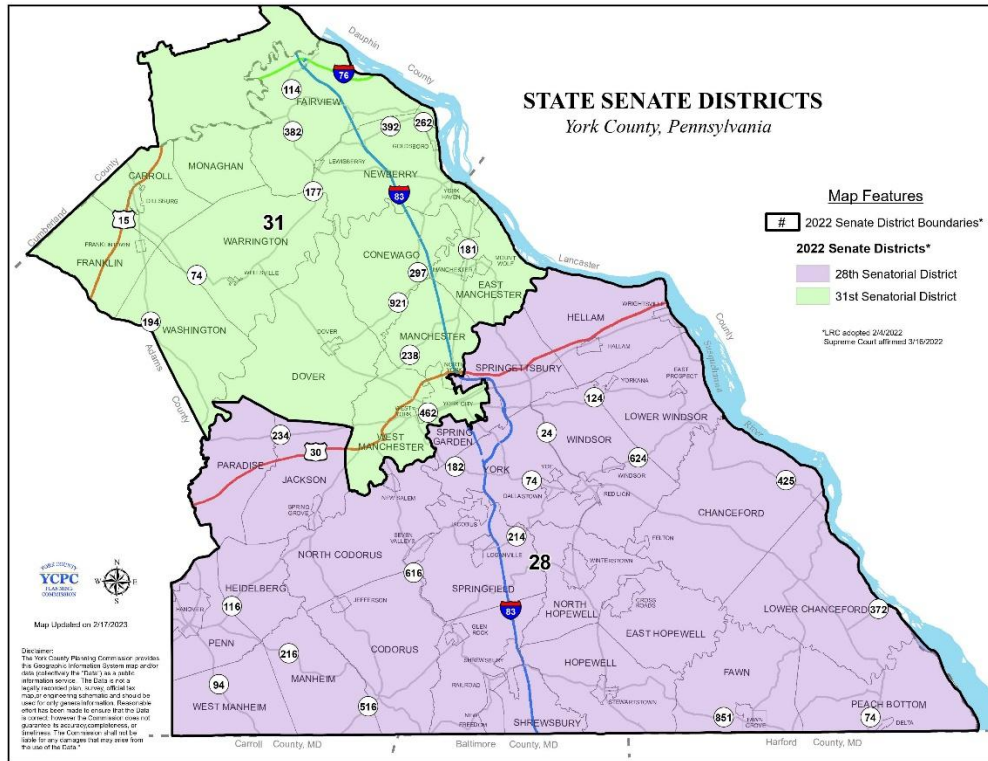
Pennsylvania Congressional Districts:



Jackson Township 1st Precinct Split:



State Senate Districts, York County:



State House Districts, York County:

